

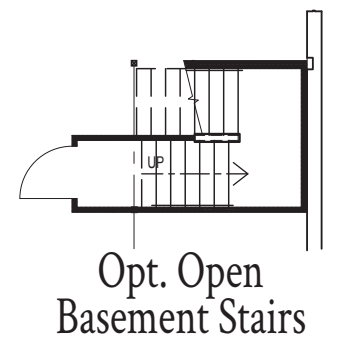
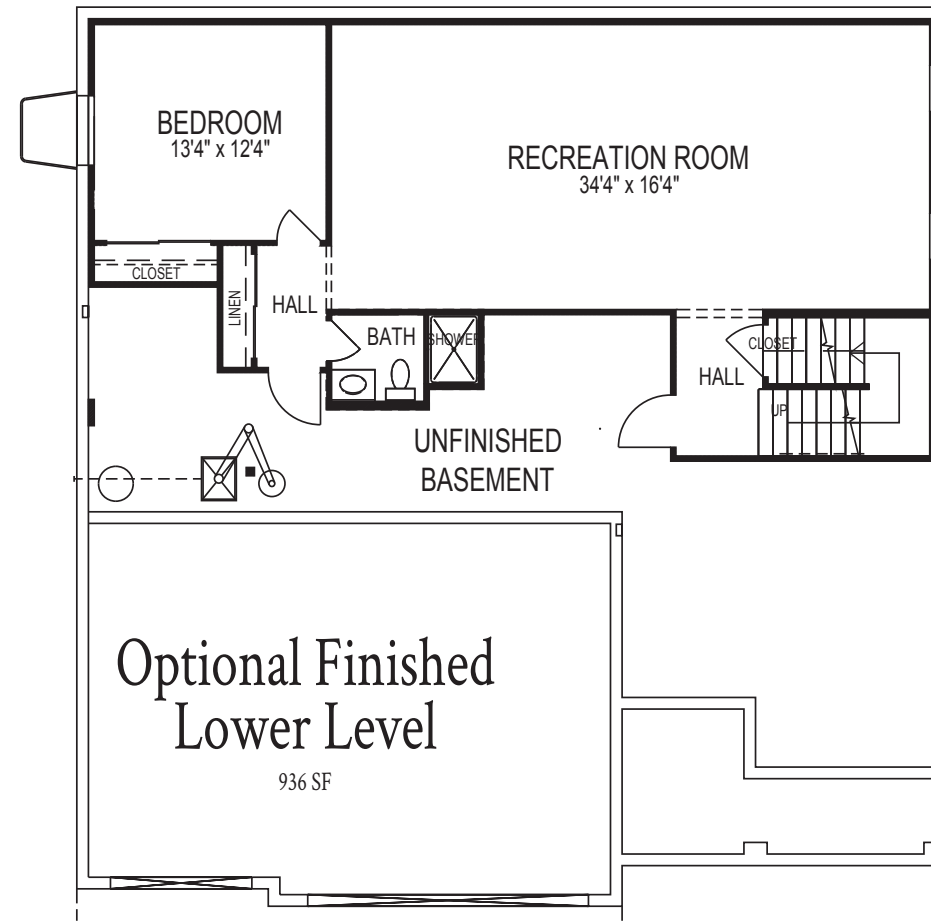
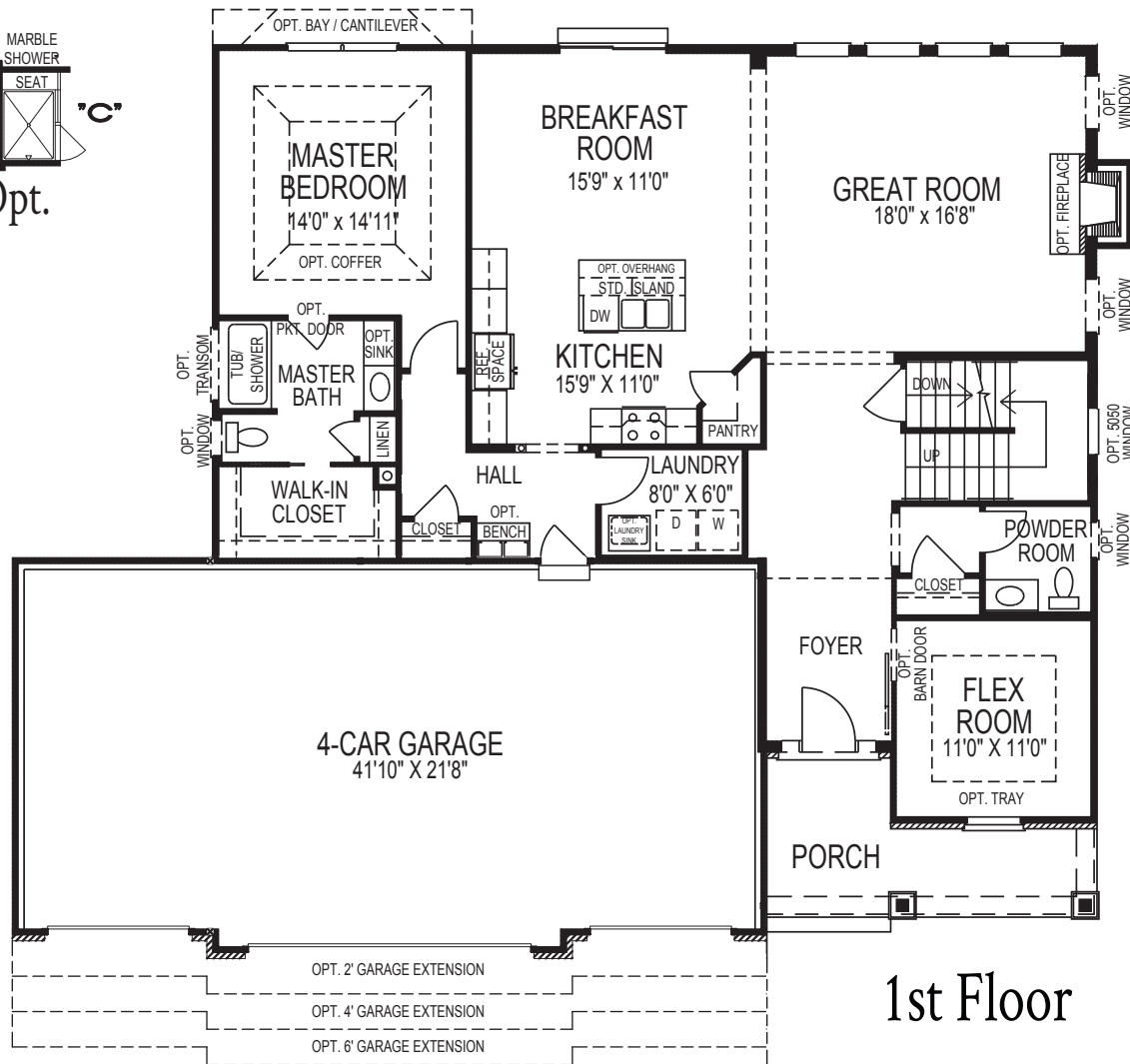
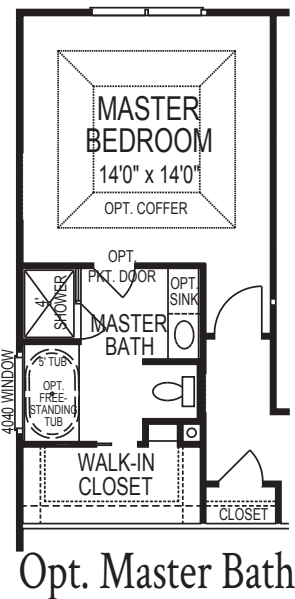
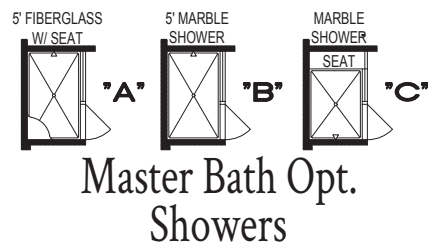
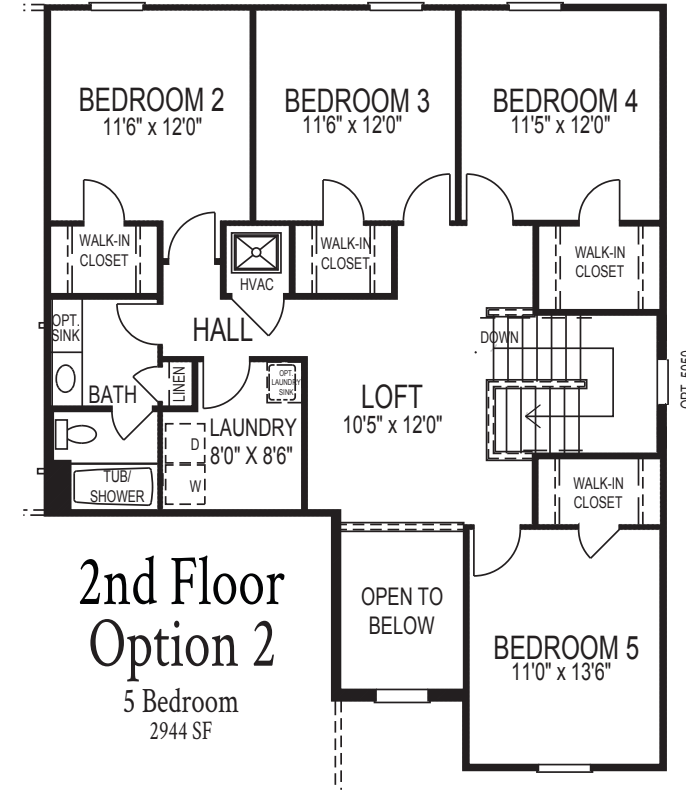
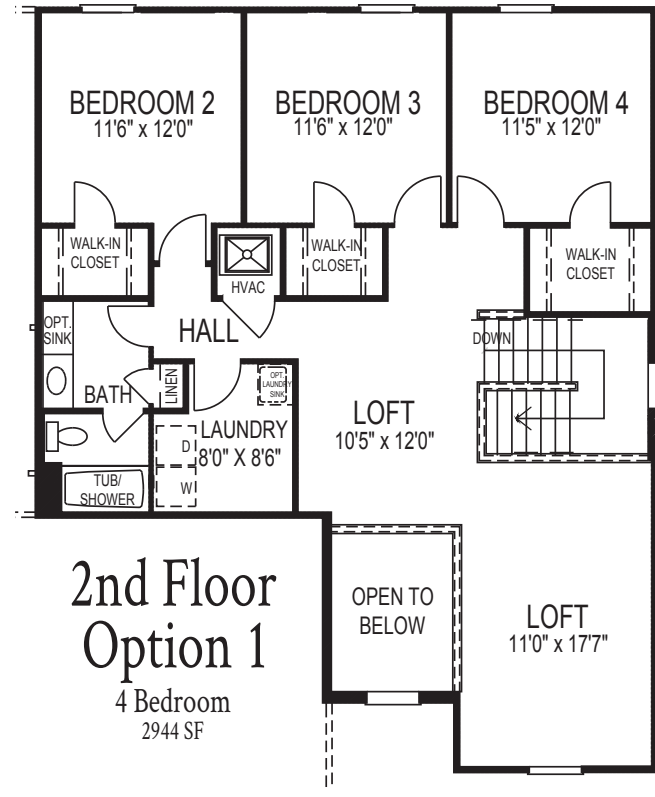
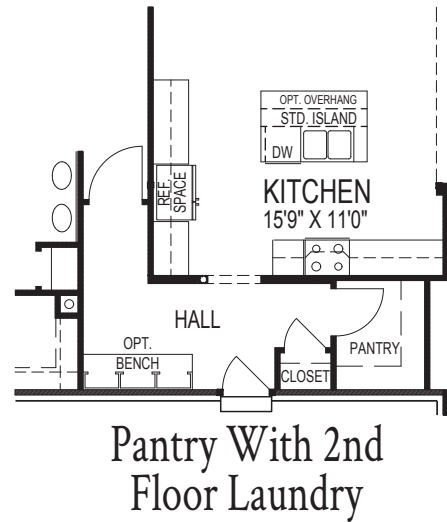
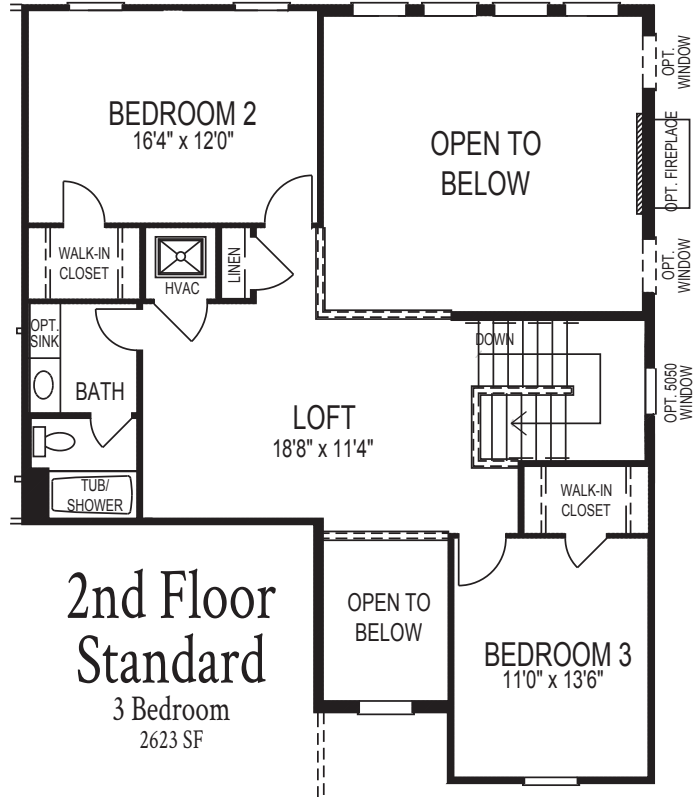
THE GRAYSON II

1 1/2 STORY | 4 CAR GARAGE | 3 BEDROOMS, 2 1/2 BATHS | 2,618 SQ FT



THE GRAYSON II

1 1/2 STORY | 4 CAR GARAGE | 3 BEDROOMS, 2 1/2 BATHS | 2,618 SQ FT



There may be variations in room dimensions, door swings, and window and door locations. We reserve the right to substitute materials of comparable quality. Finished square footage calculations for this house were made based on plan dimensions only and may vary from the finished square footage of the house as built. 1/10/2023

Due to evolutionary changes in our design process, there may be variations in room dimensions, door swings, and window and door locations. We reserve the right to substitute materials of comparable quality. 1/10/2023